



Vermeer®

USED EQUIPMENT

Bentonite mixer 750 liter/min dual tank 2x 2900 l.

*Premium quality mixing plant for use up to 750 l/min. Tank volume 2x 2.900 liters.
Two centrifugal pumps, hydraulically driven, powered by a 37 hp Kubota diesel engine.*

Year: 1997

Hours: 1800



Vermeer

Used Equipment Benelux

Website: www.vermeerholland.nl

E-mail: sales@vermeerholland.nl

The Netherlands

Street: Scottweg 35

Postal code: 4462 GS

City: Goes

Phone: +31 113 224 141

All goods are supplied in accordance with our standard terms and conditions of sale. Details on request. Items are quoted ex-warehouse and exclusive of taxes.

EQUIPPED TO DO MORE.™



USED EQUIPMENT

Operational:

- Mix capacity: max 750 l/min
- Tank: 2x 2.900 l

Engine, pump:

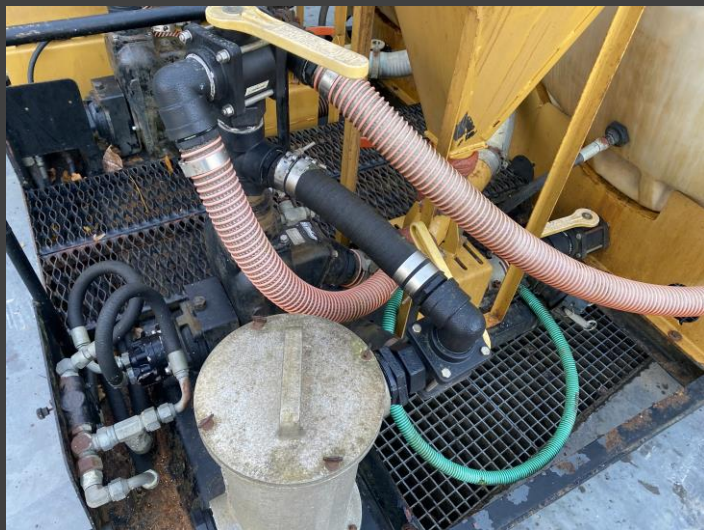
- Kubota 37 hp diesel, hydraulic power pack
- 2x Hard Iron style pump with a mechanical shaft seal

Dimensions:

- LxWxH: 427 x 244

Agitation:

- High shear venturi and in-tank nozzle system with eductors



Price: € 12.500,- (ex VAT), ex works Vermeer Used Equipment Benelux, Goes, The Netherlands

Vermeer

Used Equipment Benelux

Website: www.vermeerholland.nl

E-mail: sales@vermeerholland.nl

The Netherlands

Street: Scottweg 35

Postal code: 4462 GS

City: Goes

Phone: +31 113 224 141

All goods are supplied in accordance with our standard terms and conditions of sale, details on request. Items are quoted ex-warehouse and exclusive of taxes.

EQUIPPED TO DO MORE.™