

## Vermeer Navigator D24x40 Series II

*Completely inspected and tested by authorized Vermeer technicians.* We inspect, repair and test all relevant systems, such as the engine, the electrical system, the hydraulic system, all mechanics and the overall functions and details, following the official Vermeer guidelines while using only original Vermeer parts. All used equipment is delivered including detailed inspection document. We are confident in the quality that we deliver to our customers.

*Anything in need of repair will be taken care of at no additional charge!*

- Year of built: model 2012
- Total hours: 5953
- Working hours: 3300



### Dimensions:

- LxWxH: 610 x 212 x 193 cm
- Weight: 8370 kg

### Operational:

- Max torque 5700 Nm
- Max rpm 270
- Pull force: 107 kN (11 ton)
- Travel speed: 2,4 km/hr



**Vermeer**  
Used Equipment Benelux

[vermeerusedequipmentbenelux.com](http://vermeerusedequipmentbenelux.com)

The Netherlands  
Street: Scottweg 35  
Postal code: 4462 GS  
City: Goes

Phone: +31 113 224 141

All goods are supplied in accordance with our standard terms and conditions of sale, details on request. Items are quoted ex-warehouse and exclusive of taxes.

**Drillrods Vermeer FireStick on the rig:**

- Length: 3 meter
- Pipe diameter: 6 cm
- Minimum radius: 33 meter
- Box filled with 50 drill rods: 152 meter total

**Standard available on the machine:**

- Rack & pinion system for the rotation gearbox
- Automatic rod loading system
- Rubberized tracks
- Automatic anchoring system
- Lighting

**Engine:**

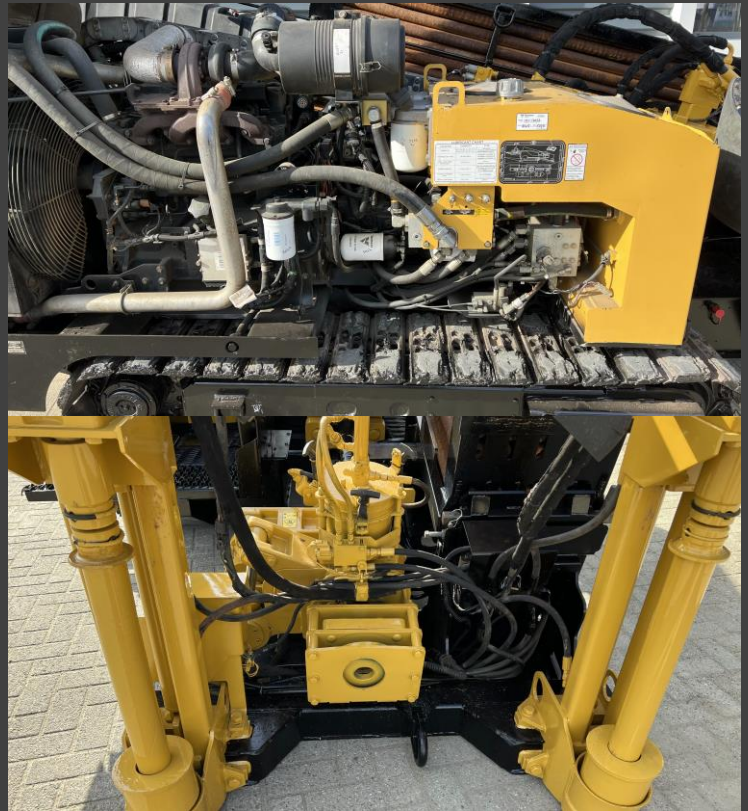
- Type John Deere 125 hp

**High pressure bentonite pump:**

- max 189 liter per minute
- max pressure 90 bar

**Miscellaneous:**

- Engine oil: 14,7 liter
- Fuel tank: 170 liter
- Hydraulic reservoir: 170 liter



**Price: € 89.500,- (ex VAT), ex works Vermeer Used Equipment Benelux, Goes, The Netherlands**

***Click [here](#) for more machine offers on our website***

***Click [here](#) for contacting us by email***

**Vermeer**  
Used Equipment Benelux

vermeerusedequipmentbenelux.com

The Netherlands  
Street: Scottweg 35  
Postal code: 4462 GS  
City: Goes

Phone: +31 113 224 141

All goods are supplied in accordance with our standard terms and conditions of sale, details on request. Items are quoted ex-warehouse and exclusive of taxes.